



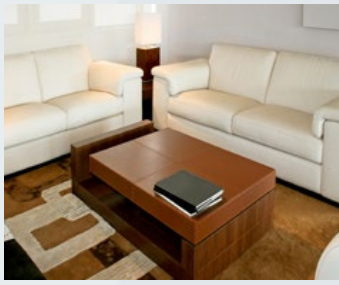
## Condair PH15/PH28

Beauty care for artworks

Mobile comfort evaporator.

The upper line to maintain the values.





## Key benefits



### Why Condair PH15 and Condair PH28?

#### Powerful.

The Condair PH15 and Condair PH28 improve air in museums, galleries, large offices, tobacco warehouses and other spacious premises.

#### Teamwork.

The wireless external sensor remotely coordinates the performance of all connected PH15 and PH28 units in very large rooms. This dispenses with cables and ensures optimum humidification throughout the premise.

#### For winter and summer.

Simply change the filter in summer, and the Condair PH15 and PH28 clean air of odours, pollen and fine dust, allowing you to breathe easy again.

#### Water refilling is made easy

The PH15 and PH28 can be commissioned without any effort – simply by rolling the tank to the nearest tap. Or you can connect your unit directly to the mains water supply, employing Aquastop for maximum safety.

#### Plug in, switch on, breathe in

To operate the PH15 or PH28, simply insert the plug in the socket and fill the water tank. This improves the condition of air in museums, galleries or residential accommodation – without the assistance of a technician.

#### Economical consumption

Evaporating technology is among the most energy-efficient forms of technology. The program mode enables you to save even more energy: your PH15 and PH28 operate with a time switch control that only humidifies your rooms when it is really necessary.

#### Hygienic and fresh

When the air in your rooms should not only be fresh and moist, but also free of bacteria: the silver ionisation rod allows your humidifier to destroy bacteria in evaporation water and ensures that humidification is flawless and hygienic.

#### Available in your colour (RAL or NCS)

We also offer you the option of selecting the Condair PH28 colour to suit your wishes. This enables simple integration of the humidifier in every room.



# Condair PH15 Condair PH28

HUMIDIFICATION

Evaporator mat

Coarse dust filter  
or Quattro filter

Evaporator mat

Coarse dust filter  
or Quattro filter

Condair PH15

Trolley water tank

Condair PH28

Trolley water tank



Simple to operate

Pull out the handle, tilt the tank and get rolling – refilling is effortless if the next water source is some distance away. The rollers move smoothly, so that even a completely full 20 or 30 litre tank can be returned to its position without any problem and fitted again with a “click”.

The PH15A and PH28A models are designed for locations with a direct water connection: they can be connected to the mains water supply, and the Aquastop system ensures that only the volume of water that can be evaporated flows into the unit.



Practically maintenance-free

PH15 and PH28 labour untiringly to achieve optimum air humidity in your premises. The units also run reliably and safely in areas where water has a high mineral content. The few components which require cleaning from time to time are easy to access and can be assembled with ease – without the need for a technician.



Programmed economy




You can control humidification capacity at the push of a button and set the desired humidification time with precision to the exact minute. This means that the PH15 and PH28 only function when it is really necessary, and you only humidify the air to the extent you really need. This saves water and electric energy, and your operating costs are reduced as a result.

The key control panel lock secures your unit against unauthorised manipulation – an indispensable advantage in public buildings.



### Hygienically clean

The PH28 is manufactured with an integrated silver ionisation unit, and the silver rod can be retrofitted to the PH15. Silver ions added to the water kill germs and bacteria in evaporation water, with the humidified air meeting the criteria demanded for biological purity. The PH15 and PH28 help in this manner to protect people and sensitive exhibits in museums, to give an application example.

-  Silver ion
-  Sulphur
-  Germs, bacteria

### Optimum humidity distribution

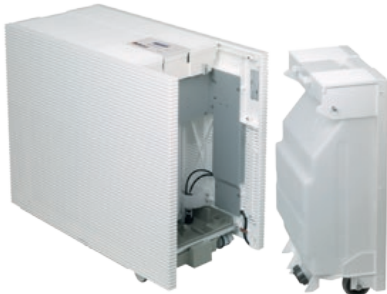
The air direction can be individually selected through the three outlet grids on the Condair PH28 to ensure optimum humidity distribution in the room. Simply remove – rotate – fit the grids. This helps avoid any annoying draught.

### Controlled humidifying of large rooms

The filter can be changed with ease – and your humidifier is converted into an air cleaner which effectively protects you and your visitors from harmful pollen, dust particles and unpleasant odours. This means that the PH15 and PH28 also make an important contribution to health in summer.

# CONDAIR PH15/PH28

CONDAIR PH15? CONDAIR PH28? CHOOSE THE UNIT THAT BEST SUITS YOUR REQUIREMENTS



Condair PH15



Condair PH28

Although the “innards” of the two comfort humidifiers differ considerably: the Condair PH15 and Condair PH28 both perform with the same impressiveness when it comes to reliability, user-comfort and efficiency. The main difference: the size of the water tank and the maximum size of the rooms to be humidified and standard equipment.

	PH15	PH28
Electronic water level detector	■	■
Electronic overflow detector	■	■
Silver ionising	●	■
Filter set for air cleaning	●	●
Water connection	●	●
Control via radio hygrostat	●	●
Bespoke unit colours		●

■ Standard  
● Option

## The perfect additions to your system

Radio hygrostat

Sieve filter for water connection

## Technical data

Typ	PH15				PH28			
	1	2	3	4	1	2	3	4
Capacity levels								
Humidification capacity [l/h]								
at 25°C and 20%rH	0.8	1.1	1.5	1.7	1.7	2.1	2.4	2.7
at 23°C and 45%rH	0.6	0.8	1.0	1.3	0.9	1.2	1.4	1.6
Air circulation rate [m³/h]	155	195	280	340	320	420	600	750
for rooms up to a max. of [m³]	280	380	510	580	430	600	730	900
Sound pressure level [dBA]	33	38	45	50	40	48	54	58
Sound power level [dBA] (according EN ISO 3741)	47	52	59	64	54	62	68	72
Mains voltage	220..240 VAC/1, 50..60Hz or 90..100 VAC/1,50..60Hz							
Power consumption	max. 72 watts				max. 128 watts			
Weight (empty)	25 kg				43 kg			
Water tank capacity	20 litres				30 litres			
Dimensions (W x H x D)	730 x 610 x 370				800 x 750 x 440			
Conformity	VDE, GS, CE, GOST				VDE, GS, CE, GOST			